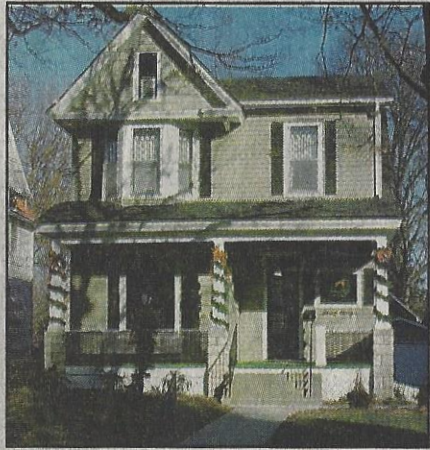


HERALD-WHIG LIVING

A Nice Fit

Maureen and Don Schuering's home at 2011 Prairie has met the family's needs for almost 30 years



By Ruth Hultz

Herald-Whig Staff Writer

When Don and Maureen Schuering returned to Quincy in 1973, they wanted to live in a quiet neighborhood close to school and parks.

The actual house was secondary. However, they bought the Edward and Frances Luegering home at 2011 Prairie.

And it has been a wonderful house that has met the family needs for more than 30 years.

Maureen said the house has always been a nice fit because they adapted the house to their needs at each stage of family life.

"We really didn't plan to stay this long," Maureen said.

But the house grew with them and they didn't feel the need to move on.



Sensible Homes



By James Dulley

Tips for flushing out right toilet

Q: Dear Jim: Our old toilet looks bad. I would like a new stylis one that saves water, but I rea the new ones do not flush effectively. What type of efficient toilet saves the most water but still flushes well? — Pam G.

A: Dear Pam: There are toilet designs available that use no water or just a pint per flush, but you are probably looking for a more traditional toilet design. By law, all toilets sold today cannot use more than 1.6 gallons of water per flush (gpf). Your old one probably uses five gallons or more.

The dollar savings on your water bills, not to mention the environmental benefits, from installing a new low-water-usage toilet can pay back its cost in several years. People don't realize how often toilets are flushed. Toilets can be the greatest water consumer in a typical home.

Your old toilet uses a gravity flush