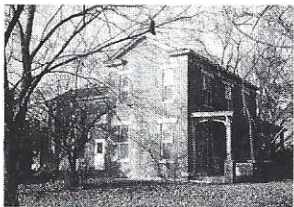


13 *Brown/Speckhart Farmhouse*

3201 North 12th Street



Built circa 1850 for Charles and Samuel Brown on their 160-acre tract, this two-story brick farmhouse is in the Greek Revival style

with some Italianate details. Physical evidence indicates the rear Greek Revival one-story section could have been built in the 1830s or early 1840s, and the front two-story portions built against it in the 1850s. A curved Italianate front door and sidelights grace the facade.