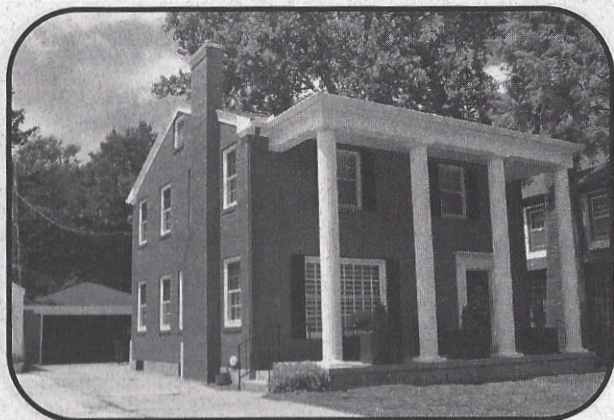


## 326 S. 23rd Street (1947)



**H.H. and Mary Catherine Paben House**  
**New Traditional Classical Style**  
**Builder: Russ Allen**

This striking house probably made quite a splash in the neighborhood when it was built in 1947 by the Paben family. H.H. Paben was an oil company representative and Mary Catherine was a bookkeeper, mother to three boys and later a Quincy elementary school teacher. Members of the family lived in the home for 60 years

The then cutting edge house was built by Russ Allen Construction, using plans purchased from a blue print service. Russ Allen is known for building the post-World War II sub division, Woodlawn, which was the first of its kind in Quincy. He also built the CB & Q Depot, the Motorola Building, Hansen-Spear Funeral Home, as well as Lincoln and St. Boniface schools. According to the authoritative [Field Guide to American Houses](#) by Virginia McAlester, 2013, the house is New Traditional Classical Style. Notice the “ranch house” windows, the scaled-down door surround, asymmetrical façade, and the main floor traffic flow. It was intended to have a roofline balustrade, which was mistakenly eliminated during construction, and thus the house differs significantly from its original planned appearance. Two previous sets of wooden columns deteriorated; those on the house today are metal. The roof is slate, the master bedroom porch is floored in copper and the garage has a Marvel Matic garage door opener—to note a few of the home’s high end details.

Entering the house, visitors are greeted with a dramatic sense of space and light—with the glass block window on the right and the spacious, window-lined living room on the left. The house is filled with well-preserved early mid-century details, such as the streamlined door and window trim, the kitchen phone nook, the milk box, now mailbox, on the basement landing, and the clever medicine cabinets from the Farie Manufacturing Company of Decatur, Illinois. The fireplace is original, and the hardwood floors, once dressed in carpeting, are newly re-finished. A surprise in the otherwise “modern” house is the stairway bannister, which was taken from an old Missouri house. Notice the ivory circle in the newel post—a sign of a paid-off mortgage. The Art Deco escutcheons and sparkling glass door knobs are an additional unexpected feature.

FALL 2014