

1230 Park Place
1889 • Architect: John Batschy
Julius Silberman House

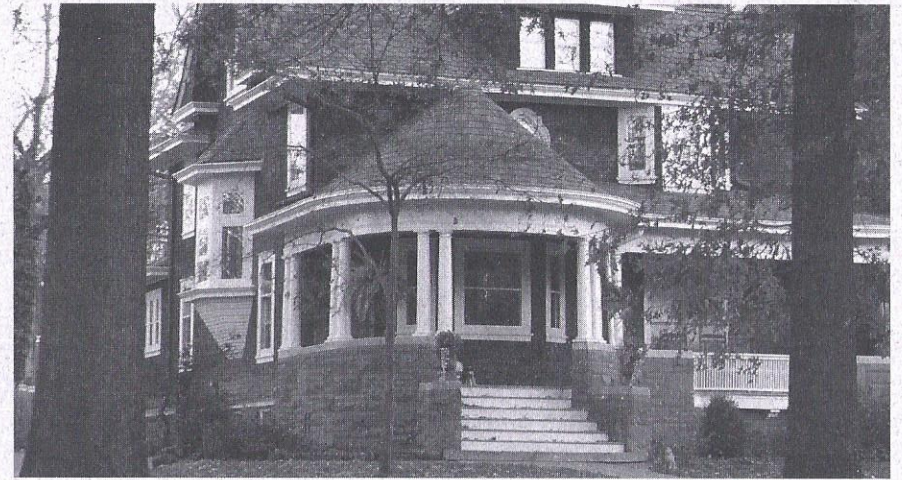
Designed by Swiss born architect John Batschy, the patterned masonry house was one of the earliest houses built in the exclusive planned Park Place neighborhood. Built as a spec house by Binkert and Cruttenden and purchased and leased for years to various families by speculators Marie and Jason Simons, Julius Silberman was the main Quincian to live here with lengthy Quincy ties. Silverman and Brothers was an established business with branches in Chicago and Ottumwa. The company dealt in hides, pelts and wools. In the late 1870s, the firm transacted business estimated at \$1,000,000 a year.

Intricate brick and stonework is noted on all sides of the house and the carved, dressed limestone window sills and carved flourishes at the entry show expert workmanship. Molded brick softens the corners of this robust house. The brick water table and the east side chimney feature molded and intricately patterned brick. The north and east gables suggest Shingle styling with their graceful curves bending toward the windows. Also note the large Palladian style window interestingly placed on the east side of the house. Many stained glass windows adorn this house—can you tell the originals from those recently created by the homeowner?

The owners, one of whom is a restoration specialist, meticulously restored the home, top to bottom. They refinished every inch of millwork, re installed a previously removed pocket door leading to the dining room, added a custom made spandrel to the parlor entry and sewed the elaborate period draperies.

The split staircase to the second floor is interesting and useful, with its entry points from both the foyer and the kitchen. As often the case, the second floor trim is scaled down from the first floor's, but note the hallway's one-piece, floor-to-ceiling corner trims, which seem to be created from single pieces of lumber. The guest bath is recently renovated and shines with a marble-floor, subway tile shower, slipper tub and antique appointments. The en suite bath has a marble-tiled shower, reclaimed beadboard and a washbowl sink installed in an antique washstand.

The owners recently created an elaborate Eastlake style kitchen-- building custom cabinets, installing Honduras mahogany countertops in the serving area and suede-finish granite in the preparation area. The entire space is peppered with period reproduction hardware. Before entering the family room, notice the dining room's spectacular mantle and bay window.



Want Your Home On A Quincy Preserves Tour?

The Quincy Preserves conducts two annual architectural tours. The *Behind Closed Doors* Tour and the *Spring Homes* Tour. Both tours create an awareness of how fortunate Quincy is to have these many architectural treasures.

The *Behind Closed Doors* Tour takes place on the third Saturday in October. Several homes and buildings are selected to be on this tour representing the different architectural styles found in Quincy. The *Spring Homes* Tour was recently decided by the Board of the Quincy Preserves to replace the homes tour normally scheduled for the second Sunday in December. It will take place the first Sunday in May.

Those interested in having their home or business on an upcoming Quincy Preserves Tour can contact a Quincy Preserves Board Member, or by email at moreinfo@quincypreserves.org.