

1678 Hampshire (ca. 1889)



Walter P. and Mary Smith house
Queen Anne

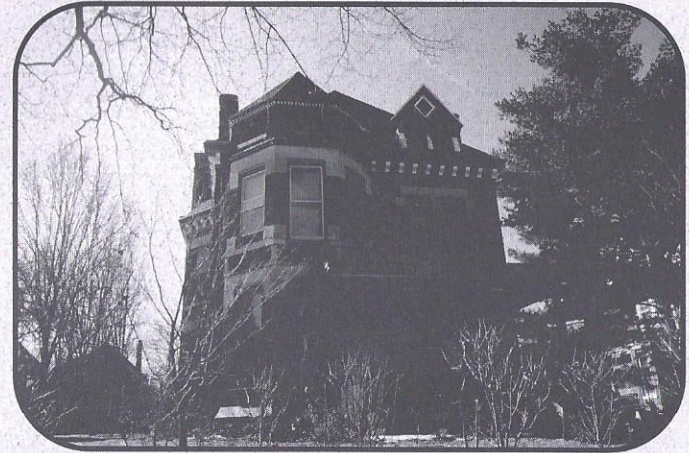
The June 1, 1889, issue of the *Quincy Daily Journal* noted on page three, that "Mr. Walter P. Smith will erect shortly a \$5,000 residence at Eighteenth and Hampshire. It will be of pressed brick with modern improvements."

The two-story, brick residence of Walter and Mary Smith at 1678 Hampshire stands out from the majority of Queen Anne homes in Quincy with its masonry walls of patterned brick and stone work, with little wood detailing. A massive limestone segmental arch crowns the arched first floor window, to the left of the hand-carved double front entry doors, beneath a pedimented entry porch. Limestone lintels and belt courses add detail to the exterior façade. A round tower constructed of basket weave brick and topped by a conical tower grace the east side of the house, while the side and back windows are topped by segmental brick arches and cutwork. Patterned shingle work adds further interest to the third-floor gables. On the west façade, heavy wood brackets support the third story, double window attic gable.

Inside the home, the sunlight filters through stained glass windows, with large exterior windows reaching nearly to the floor, a feature that drew the present home owners. A mix of jewel, pontle, stained and leaded glasses make up the five decorative windows found throughout the house, each made in a different design. Massive double pocket doors between ground floor parlors also give the home a gracious yet formal feel.

For the Nachenbergs, owners of the former Busy Bee on Hampshire, who bought the house in 1974, the house was filled with light and love, and this feeling of family warmth is still reflected today in mementos and photographs of the family and the store, carefully collected and tastefully displayed throughout the home.

1450 Vermont (ca. 1887)



George and Sarah Wells House
Victorian Queen Anne
Architect: Harvey Chatten

The George and Sarah Wells' home, at 1450 Vermont, is the third Victorian Queen Anne on the tour this year. Designed by Harvey Chatten and built around 1887, this two and one-half story brick features a front façade octagonal bay with lozenge windows and prominent stone lintels and window sills, plus stone waterline. Gabled dormers projecting through the roof line have diamond and lancet windows and stone sills. Elaborate corbelled chimneys also project through the roofline on the side facades.

Through the double carved entry doors, a second set of doors with glass inserts open into the spacious entry area, with an inviting side wall fireplace with tile and hand carved wood surround, flanked by double built-in wooden benches. Behind this, the open, double-landing front stair ascends to the 2nd story. Four sets of original pocket doors allow passage between the front and second parlors and dining room beyond. While the fireplace mantels throughout the house are of butternut and oak, other wood trim, including the paneling in the dining room and reception hall, was done in pine, stained to resemble cherry.

In the kitchen, reached through the dining room, toward the rear of the house, the current owners have retained the original white porcelain sink, using wainscoting found elsewhere in the house to rebuild the cabinet in which it now sits. Also in the kitchen, found beneath layers of linoleum and plywood, the original, unfinished wood floors given a painted diamond pattern, in keeping with the ambiance of the original kitchen.

Upstairs, one of the two front bedrooms has its original fireplace, plus a light-capturing three window bay. A single door pass through leads to a third bedroom and a small porch reached through a back window.