

Mrs. Joanna Wallace House
210 South 18th
c. 1883

Queen Anne Style
Architect unknown

owners - Chris and Monica Scholz

Joanna R. Wallace was born on September 17, 1829. She was the daughter of Joel and Eliza Rice, two of Quincy's early pioneers. The Rices came to Quincy from Kentucky in 1836. Mr. Rice laid out and named Commercial Alley in Quincy where he built a stone packing house and carried out one of the most extensive pork packing businesses in the state. The husband of Mrs. Wallace remains a mystery. Joanna is listed as living with her parents in the 1850 census, but is not listed with the Rices or any Wallaces in the 1860 census. She returned to Quincy in 1863, and lived in the house until 1892. She died on New Year's Eve, 1911.

The exterior of the home has simple drop siding on the first floor. It has wood shingles on the second floor of the front facade with board and batten on the rear of the second floor. The eaves of the gable are decorated with quatre foil cut-outs which can also be found along the back fascia board of the gables. The north side of the house has a second story porch with keyhole opening on the east and a round opening on the north. The exterior was recently repainted in a historical color scheme. The wrap around first story porch has stone piers and supporting square wood columns.

This home features a unique entry foyer of butternut wood with beaded, board panels on the ceiling. A significant feature of the foyer is the stained glass window above the fireplace mantle. It is jeweled as well as stained glass. The front window of the house is similar. The foyer includes the stairway leading to the second floor. The entryway features Eastlake styling. The floors are oak and were refurbished by the Scholzs. The living room contains reed molding and a bay window. The dining room has a square bay window with panels similar to those in the foyer. There are pocket doors between the dining room and foyer. The chandelier, while not original to the house, does date back to c. 1900. The Scholzs removed a butler's pantry and wall to enlarge and modernize the kitchen. The Scholzs are now in the process of renovating the second story of the house.

Herald-Whig LIVING

Solid and Inviting

Chris and Monica Scholz bought a house, solved a mystery and got a home where their children can grow

By Jim Lenz

Herald-Whig Staff Writer

In one transaction, Chris Scholz got a home and solved a riddle from his youth.

As a boy, Scholz often marveled at the house at 210 S. 18th. It appeared to have a fireplace with two chimneys.

The fireplace in the foyer looks like it has a split flue. A stained glass window separates the "chimneys."

When he and his wife, Monica, bought the house five years ago, Scholz discovered one of the chimneys is a fake. Only the right one is functional.

The Scholzes are happy to have a home in the East End Historic District. "We looked at a lot of homes of various styles," Scholz said.

When they came upon the house at 210 S. 18th, "we fell in love with it when we first came in," Mrs. Scholz said.

The previous owner, the widow of attorney Lawrence Emmons Jr., had maintained the house well. In fact, the integrity of the vintage house impressed the Scholzes.

Quincy architectural expert Paul Larson examined the house and found no hard evidence of alterations. But he told the Scholzes he thought the porch was altered at the foyer's north



The Wallace house, 210 S. 18th, is home to Chris and Monica Scholz and their family. H-W Photo/Joe Liesen

throughout most of the kitchen. In contrast, the kitchen walls and woodwork are in light colors. Cabinets and finished in a light brown, is dazzling white.

The kitchen is the one room where changes were made. Originally two chimneys were removed to clear the area. A chimney stove was removed. For convenience, the Scholzes

added an island with a range.

"You feel like you can let your little kids loose to play (in the house)," Mrs. Scholz said. She wonders how many little ones learned to crawl and walk on the hardwood floors. The Scholzes sons, 3-year-old Adam and 1-year-old Nick, are doing that now.

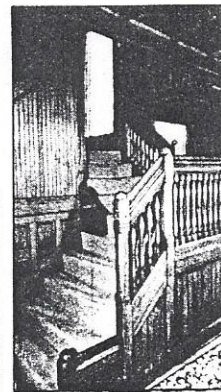
For many years, the house was owned by the Emmons family. It passed from Lawrence Emmons Sr. to his son,

Mrs. Johanna Wallace, the original owner, is something of a mystery. She was widowed while living in the house. She was born Sept. 17, 1829, and died Dec. 31, 1911. Wallace is buried in Woodland Cemetery.

This is another in a series on homes of historical or architectural significance as identified by Quincy Preserves.

AT A GLANCE

- Original Name: J.E. Wallace House
- Style: Queen Anne
- Date Of Construction: circa 1883
- Description:
 - Limestone foundation;
 - Simple drop wood siding on the first floor;
 - Wood shingles on the front facade of the second floor;
 - Board and batten on the back of the second floor;
 - Cross-gabled roof;
 - Second story bay on the south side with a gabled roof;
 - Dormer on the north side with a gabled roof;
 - Octagonal bay window on the first floor, facing south;
 - Wrap-around porch with a wood ceiling;
 - Stone piers that support square wood columns on the front porch;
 - Eaves of the gable are decorated with quatrefoil cut-outs that also run along the back fascia board of gables;
 - Flue above the first-floor fireplace is split into a decorative chimney and a functional chimney on the north side.
 - Second-story porch on the north has a keyhole opening on the east and a round opening on the north.



H-W Photos/Jeanne Long

A staircase shows off the home's extensive woodwork. Most of the house's woodwork is dark and rich in color

1898

S. 18TH ST.



1800

201

209

217

(215)

744

202 206

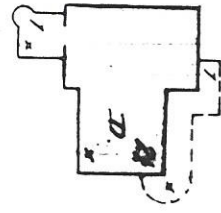
170

208

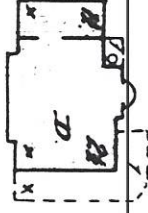
202

8

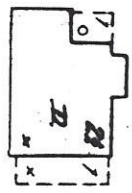
1898



1753



1777
1651



1709
1655



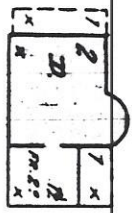
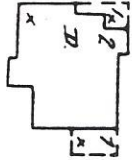
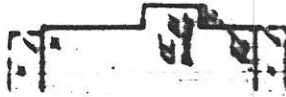
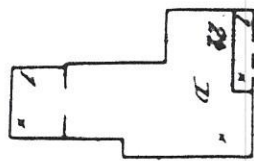
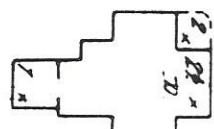
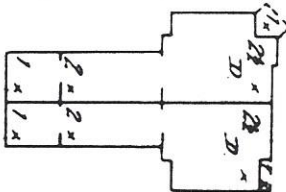
RSEY

1656
1124

1652
1176

1658
1170

1654
1706



20

20

0

S. 18TH ST.

196 S. 18TH ST.

TR. H.

(275)

1800

201

209

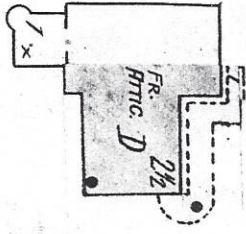
S. 18TH ST. 217

S. 18TH 202 206

S. 18TH 210

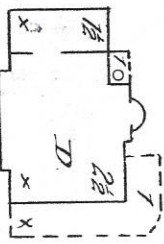
S. 18TH 218

228



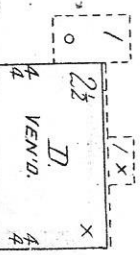
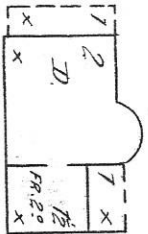
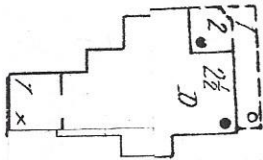
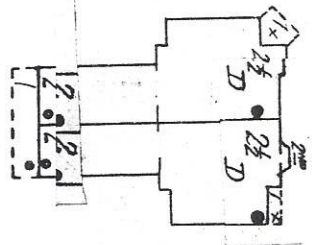
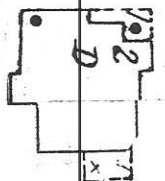
1733 JERSEY.

1991 1991

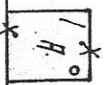


1898
(1926)

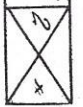
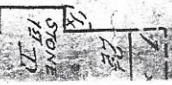
1716 JERSEY 1666



R. 218 S. 18TH ST.



20



1803

18

JERSEY

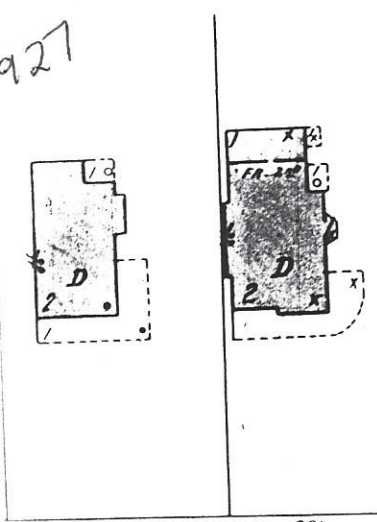
1716 1666

2 1/2

1878

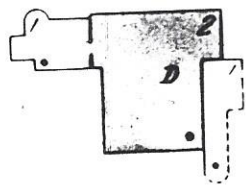
66'

1927



1655

1661



1681



6" PIPE

6" PIPE

200

202

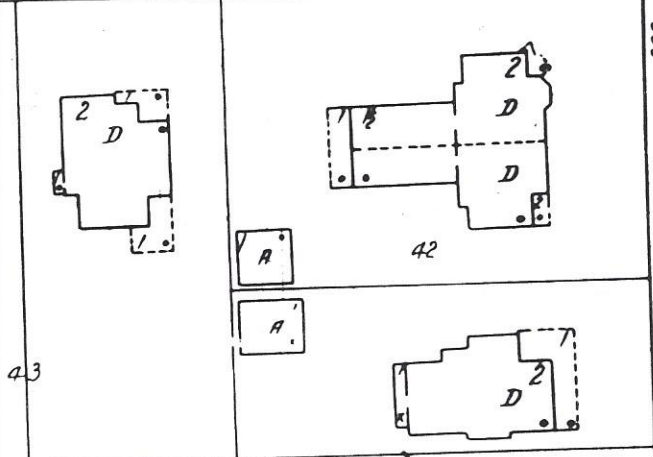
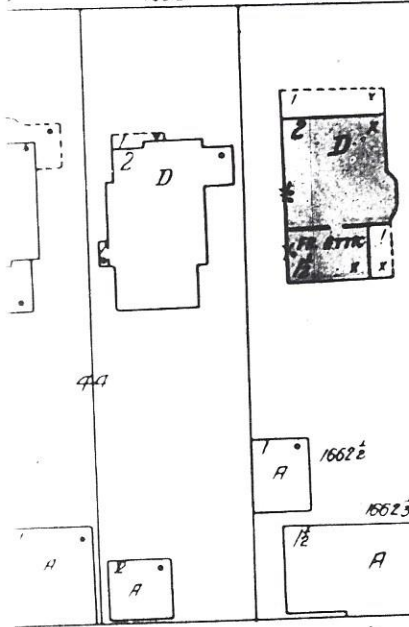
ST.

284

1658

1662

1666



200

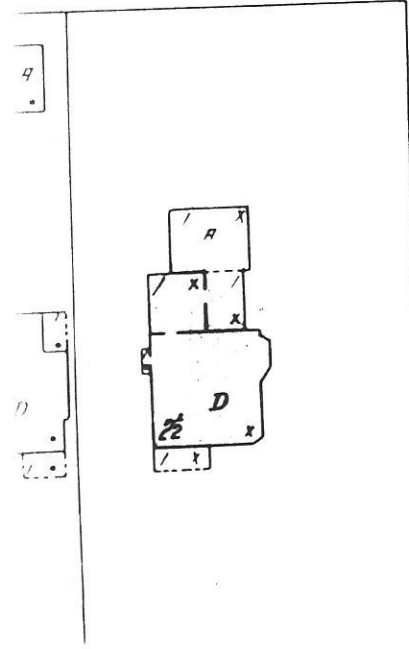
202

200

218

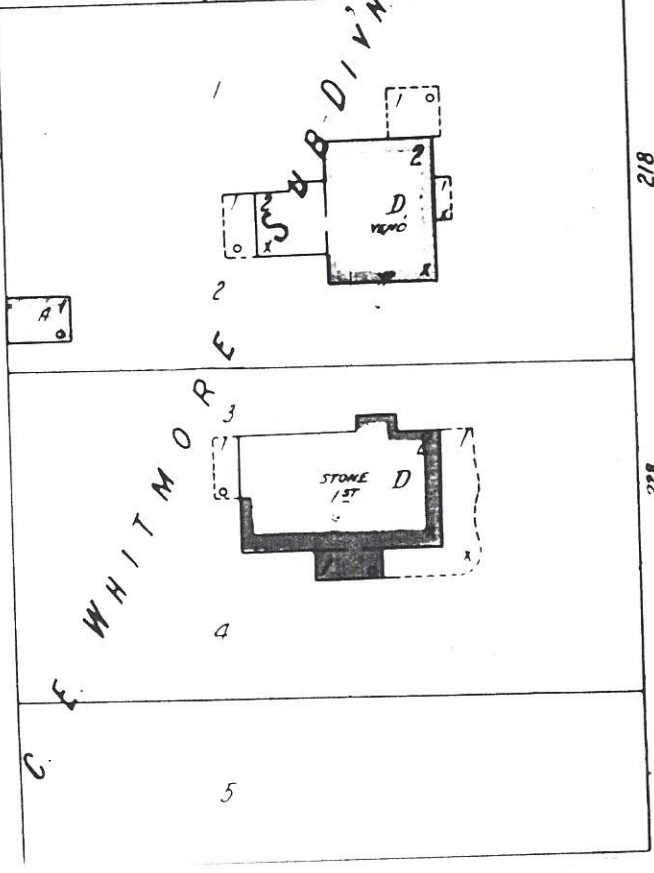
S. 18TH

SUB-DIV



20'

20'



228

C. E. WHITMORE

2

3

4

5

4

5

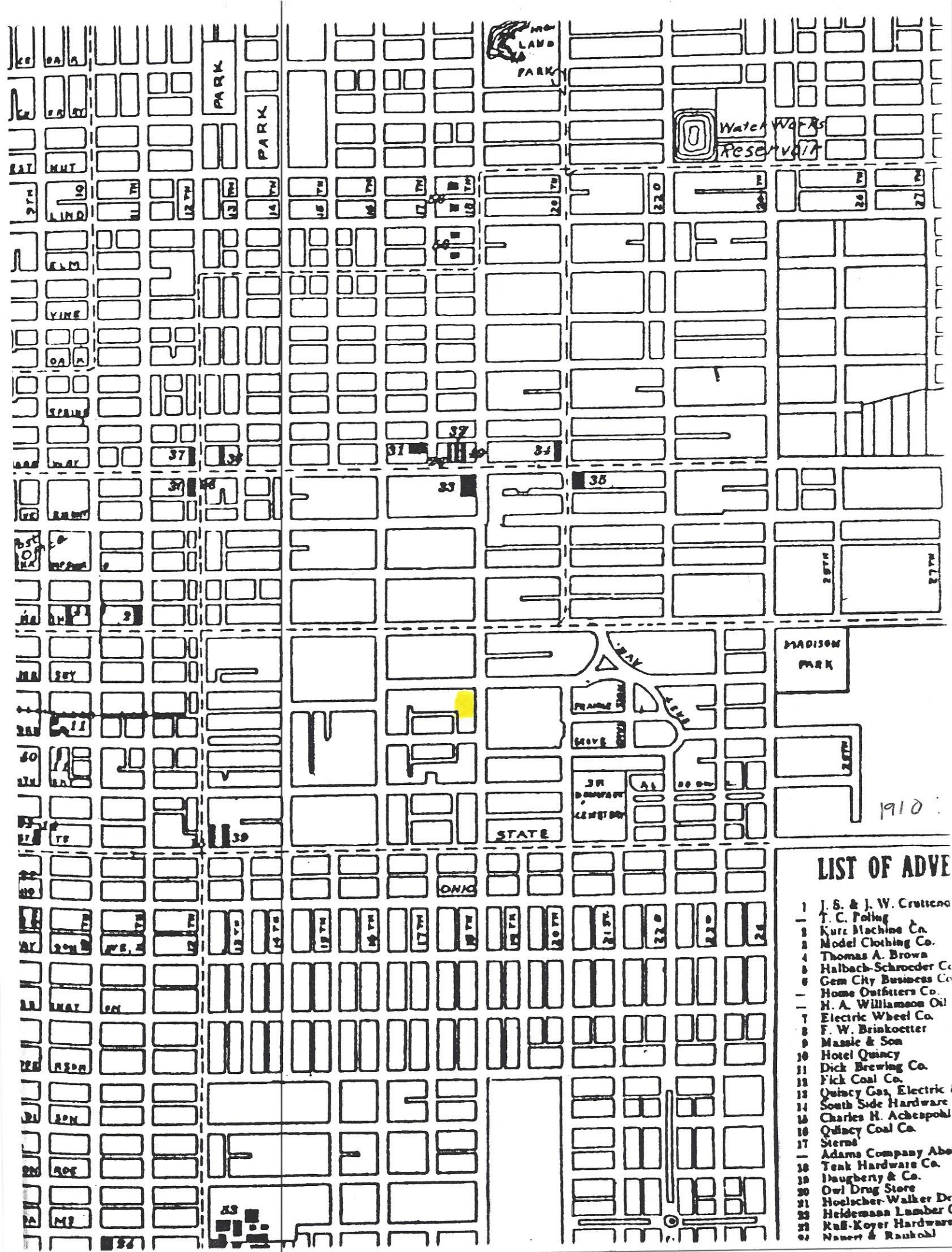
1927
Sawborn
(1957)
(1950)



S. 18TH ST.

264

210 - yellow (frame)



LIST OF ADVE

- 1 J. S. & J. W. Crittenc
- 2 T. C. Pottig
- 3 Kurz Machine Co.
- 4 Model Clothing Co.
- 5 Thomas A. Brown
- 6 Halbach-Schroeder Co.
- 7 Gem City Business Co.
- 8 Home Outfitters Co.
- 9 H. A. Williamson Oil
- 10 Electric Wheel Co.
- 11 F. W. Brinkoetter
- 12 Massie & Son
- 13 Hotel Quincy
- 14 Dick Brewing Co.
- 15 Fick Coal Co.
- 16 Quincy Gas, Electric
- 17 South Side Hardware
- 18 Charles H. Achespohl
- 19 Quincy Coal Co.
- 20 Sterns
- 21 Adams Company Aber
- 22 Teak Hardware Co.
- 23 Haugbeny & Co.
- 24 Owl Drug Store
- 25 Hoelscher-Walker Dry
- 26 Heldemann Lumber C
- 27 Kull-Koyer Hardware
- 28 Nauert & Raubohl