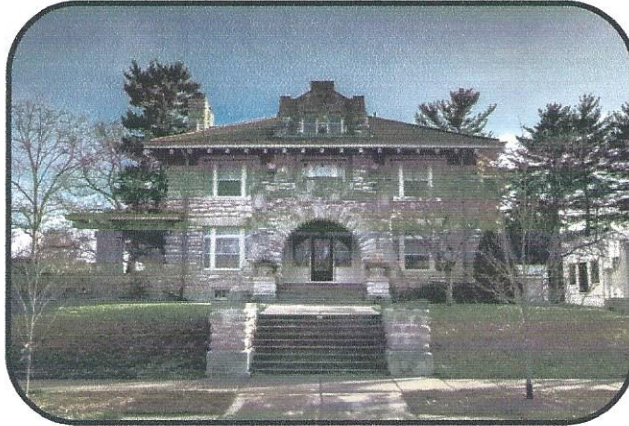


1850 Jersey St.



John Henry Bastert, a resident of Brachewede, Westphalia, immigrated to the United State and settled in Adams County. His father Henry became part of the German Insurance Agency in 1852, joining a new industry in a most successful company, and later brought his son, J. Henry, into the business. Because of the World War I resentment toward anything German, new owners changed the name to Miller, Castle and Freiburg Insurance Company which continues in Quincy Commerce today as the Freiburg Insurance Company.

Successful insurance sales and marriage led J. Henry in 1913 to build a home, commissioned to George Behrensmeyer and located in the residential East End of Quincy. The interior case work is nearly identical to Behrensmeyer's often demonstrated neoclassical vein, primarily seen in the newel caps of the staircase banisters. The exterior materials, however, demonstrate rustication, a method of masonry so popular in 19th century building. The native grey limestone is laid with exaggerated joints to reflect the rough texture of the material as a major design component.

The home has undergone many changes over the years. It was remodeled in the 1970's after two major fires destroyed the main living spaces. Fortunately, the homeowners were able to maintain and preserve the architectural integrity of the house and kept most of the major components.