

1621 VERMONT - W. T. DWIRE HOUSE

2 STORIES
QUEEN ANNE } CARRON SURVIV
c. 1897

OWNERS
↳ BILL ; MARY TWADDLE (- 2001)
↳ JORDA ; ROO FRAZER (-)
↳ W.T. DWIRE (WIFE ELLA O.) 1900, 1903-04

STEEPLY PITCHED HIPPED ROOF w/ A CLASSIC DORMER
DOMINANT FRONT-FACING GABLE

1900 = W.T. ; ELLA O. DWIRE
1903-4 = DWIRE

BUTTAWAY BAY WINDOWS IN GABLE

1914 = HERMAN ; FRANCES HEINTZ

ASYMMETRICAL FACADE w/ FULL-WIDTH

1916 = HEINTZ

ONE STORY PORCH

1918 = HEINTZ

DECORATIVE HALF-TIMBERING IN GABLE

1923-4 = DR. JOHN E. ; ALICE MILLER

HEAVY TURNED POSTS w/ SOLID

1925 = MILLER

SPANDRELS ON PORCH

1926-7 = EUGENE B. ; LOUISE POTTER

LINE OF 3 WINDOWS IN GABLE

1928-9 = POTTER

BAY WINDOWS

1937 = POTTER ; ANNA BUSTING, CATHERINE

POLYGONAL WOODEN TOWER

SCHREACKE (MAID) ; DR. RALPH S. ;

PROJECTING FROM SECOND STORY

WINIFRED THESEN

PLAIN SHINGLE PATTERN ON ROOF

1938 = POTTER ; BUSTING ; SCHREACKE ;

PORTE COCHERE

THESEN

1940 = THESEN ; LILLIAN POTTER ;

BUSTING

1945 = THESEN ; POTTER

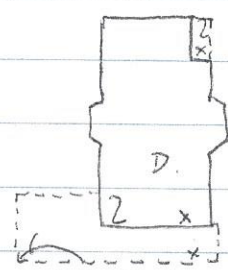
1949 = THESEN

1952 = THESEN

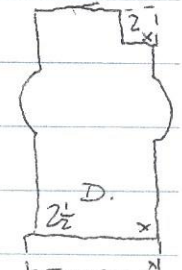
1621 VERMONT

WILLIAM DWIRE IN QUINCY ILL. 1888
• WELLMAN ; DWIRE TOBACCO CO.
• CAME TO QUINCY IN FALL OF 1876

~~ESTABLISHED 1898~~



1621 VERMONT (1927), SAME 1950



1619 VERMONT (1898)