



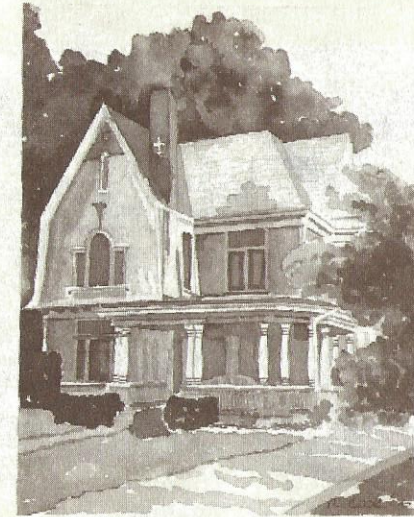
2531 Maine Street
Eclectic Cottage • circa 1897
Richardson House

The property lines for 2531 Maine originally went all way to Madison School where horses were allowed to roam. Records show that Albert A. and Mary E. Richardson were the first owners of a house on the property. Albert was vice president of the Richardson Lubricating Company. The house was built circa 1897 in an Eclectic Style that combines elements of several different styles. The current owners, David and Sharon Zimmerman removed previous siding to uncover the original board and batten. This removal also showed evidence of a large second floor window at the back of the house. Dave and Sharon still consider the house a work in progress, since there are many more details to restore.

A front sitting room is part of a wide bay on the south side of the house. Two pocket doors lead to the parlor. One is multipaned glass and one is wood paneled. The parlor has a large fireplace with a wood mantel and rounded brickwork. The staircase has butternut wood ornamentation. At the landing, notice the spectacular window that allows multiple light patterns to come into the house.

The corner closets on the second floor are original. Other closets on this floor have “secret” pathways that lead to other sections of the second floor. The bedrooms and bathrooms have been moved around through the years. The current arrangement has a circular flow. The old toilet in the bathroom came from an apartment that was above Illinois School Supply. The raised floor section from the bathroom to the hallway houses plumbing.

Back on the main floor the first opening into the kitchen is where a chimney used to be located. The Zimmerman’s added the tin ceiling in the kitchen, painted the kitchen cabinets, and added the east wall to define the space better. The family room/television area at the back of the house is not original to the house but was added by a previous owner. When the Zimmermans moved in four years ago the backyard was all concrete. They have restored the area with wisteria trees and perennial ground plants.



126 South 24th Street
Queen Anne/Shingle Style • circa 1895
Edwin and Tot Collyer House

The Edwin and Tot Collyer House was built in the Queen Anne/Shingle style circa 1895. Edwin was a clerk for the Railway Mail Service. The Collyers owned a great part of the surrounding land, which they sold off through the years in 60x90 foot plots.

The house exhibits several decorative details including a Palladian window, unusual attic windows, pronounced key stones and a large fleur de lis symbol on the chimney. The wraparound porch has round wood columns and a wood balustrade. Of special note is the gabled wing on the north side that has a box bay/oriel. This bay/oriel has arched windows and a third floor balcony.

The large front door has multiple panes and a transom. After the paneled wall sections transition the viewer into the parlor, observe a corner cabinet to one side and a bookcase to the other side. A rectangular window insert commands a presence with its beveled leaded glass. The fireplace is in the corner with a tiled hearth. A pocket door separates the parlor and dining room. In the dining room there is oak flooring and a bay window. The kitchen has been remodeled by the present owners, Bill and Sheila Don, to accommodate their family’s needs.

The staircase has wood ornamentation with the dentils, turned balusters, curvature to the banister, and newel post finial. The second floor contains four bedrooms and a bathroom. The third floor has a master bedroom suite with a sitting area, fireplace, walk-in closet, and large bathroom. Notice the repeated arch windows at the north and south sides on the third floor.

At the rear of the property is the original carriage house with a 600 square foot loft. Sheila has fashioned garden areas around the house that carry a white-on-white Victorian appearance.