



QUINCY PRESERVATION COMMISSION

706 MAINE STREET, 3RD FLOOR, CITY HALL ANNEX
QUINCY, ILLINOIS 62301
217-228-4515
FAX 217-221-2288

July 29, 2013

Mr. and Mrs. Kenneth & Tanya Sparrow
1206 Park Place
Quincy, IL 62301

Re: 1206 Park Place

Dear Mr. *Kenn + Tanya,* and Mrs. Sparrow:

As the owner(s) of one of the buildings in Quincy's Park Place Local Historic District, you are likely aware of the protections afforded to the exterior of the building by virtue of its Local District status. However, because District designation runs with the property and properties do change hands, the Quincy Preservation Commission is sending this reminder note to the current property owners in each of our Local Historic Districts, as shown by Adams County tax records.

A copy of the City Ordinance that designated your property as part of the Park Place District is enclosed. A section of the ordinance lists your building's protected features.

Again just as a reminder, the Municipal Code requires approval by the Quincy Preservation Commission before changes may be made to any of the exterior features listed in the designating ordinance. The approval document is called a "Certificate of Appropriateness."

This review and approval procedure does NOT mean that a building in a Local Historic District becomes frozen in time. Alterations since the district was approved in 1998 have in fact strengthened its architectural integrity. Minor changes, including regular maintenance, the addition of storm windows, or changes to paint color are exempt from "C of A" review.

In a place with such a rich architectural history, the Quincy Preservation Commission would like to thank you for carrying on that legacy by living in and maintaining your historic property.

Respectfully,

Tom Fentem
Commission staff and Community Planner
tfentem@quincyl.gov
217-221-3663

p-6

(filed w text p. 4)

Edward and Matilda Menke House

1206 Park Place
John Batschy, architect
1891
High Queen Anne



cook

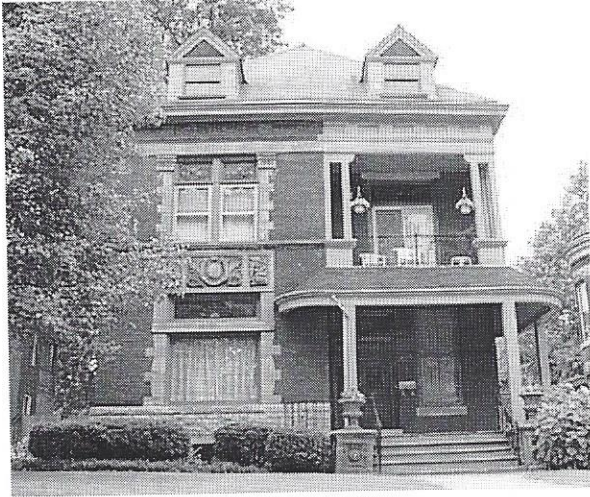
owners: John and Kim McDonald

Shortly after Cruttenden had moved into the corner house, Edward Menke built next door for himself and his new wife, Matilda Dick. The marriage united two powerful Quincy families, stone contractor F. W. Menke and the Dick Brothers of brewery fame. An unusual combination of stock ornamental brick with carved stone from Minnesota, Ohio, and Indiana adorns the walls. Probable architect John Batschy gave Menke a design that laced together stock patterns with original modern Romanesque carving. Though still Queen Anne in feeling, the facade is classically balanced; dormers and chimneys are paired, the masonry frieze is continued in wood over the porch, and the facade is exactly halved by the living room bay and recessed entry.

The interior features walnut casework in the front and side parlors and a number of fireplaces with unusual ceramic surrounds. In the living room, a bird perches in each upper corner of the tilework, while the dining room fireplace has cameos. A brilliantly colored artglass transom light in the living room mixes together beveled, pattern, ripple, opalescent, jewel, and cathedral stained glass. In the dining room a hand-painted canvas ceiling has miraculously survived.

12/13/92

1206 Park Place - Edward and Matilda Menke Residence

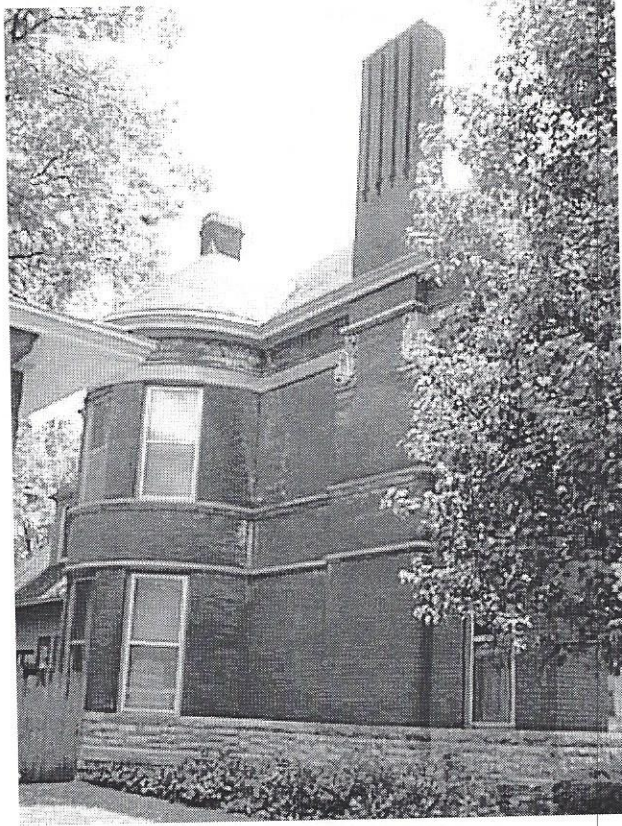


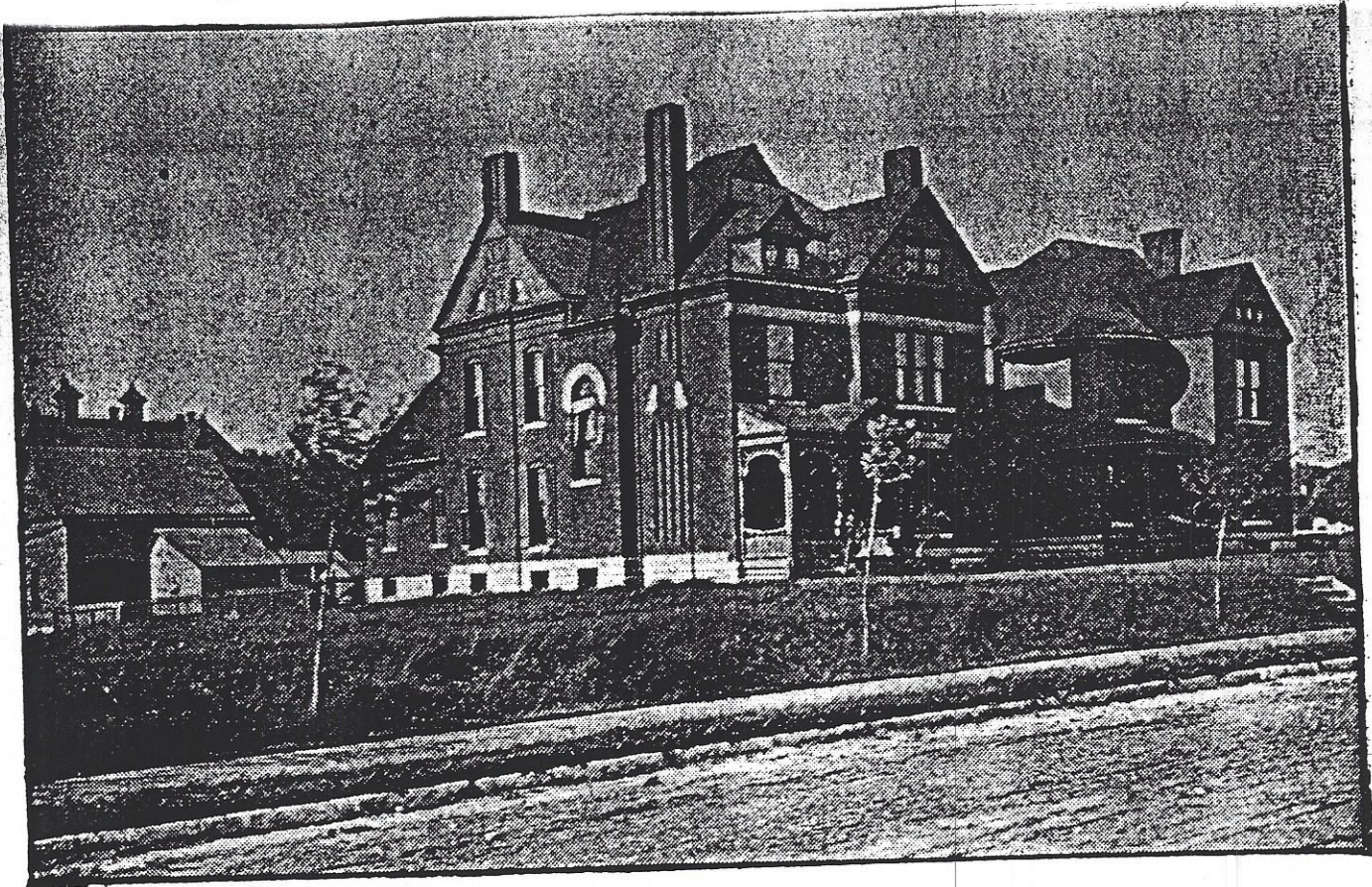
This High Queen Anne house was designed by John Batschy in 1891. The two and half story brick house has a steep hip roof and a stone foundation. A brick indent frieze wraps the house and is mimicked above the balcony in the paneling. A stone band, which also serves as the lintel for the second floor windows, follows underneath it. Two narrow stone bands also surround the house, one at the level of the sills of the second story windows and the other at the level of the lintels of the first story windows. The shingled gabled dormers on the facade have a sunburst wood carving. The right side of the facade has a recessed double door entry porch with a balcony. The porch now has undecorated square columns. The projected portion of the facade has quoined windows with stained glass transom windows. The stone panel which separated the windows is deeply cut with a stylized acanthus pattern. This decoration is also seen on the base of the urns flocking the entry steps. A chimney with decorative brickwork and molded corners exists on both the east and west sides. The east side has a round turret while the west side has a overhanging shingled gable above a square bay. The quarter round gallery windows are in the Venetian style. The central arched first floor window has a semicircular stone lintel and stone sill. One window, which exists at the mid facade level, has a vertical brick band lintel. All the windows are one over one sashes. The wrought iron railing on the porch and balcony is not original. Edward Menke was the foreman at Menke Stone and Lime Company, which laid the sidewalks in Park Place at a later date. The house is currently listed as a significant structure in the Quincy East End Historic District.

1206 Park Place - Edward and Matilda Menke Residence

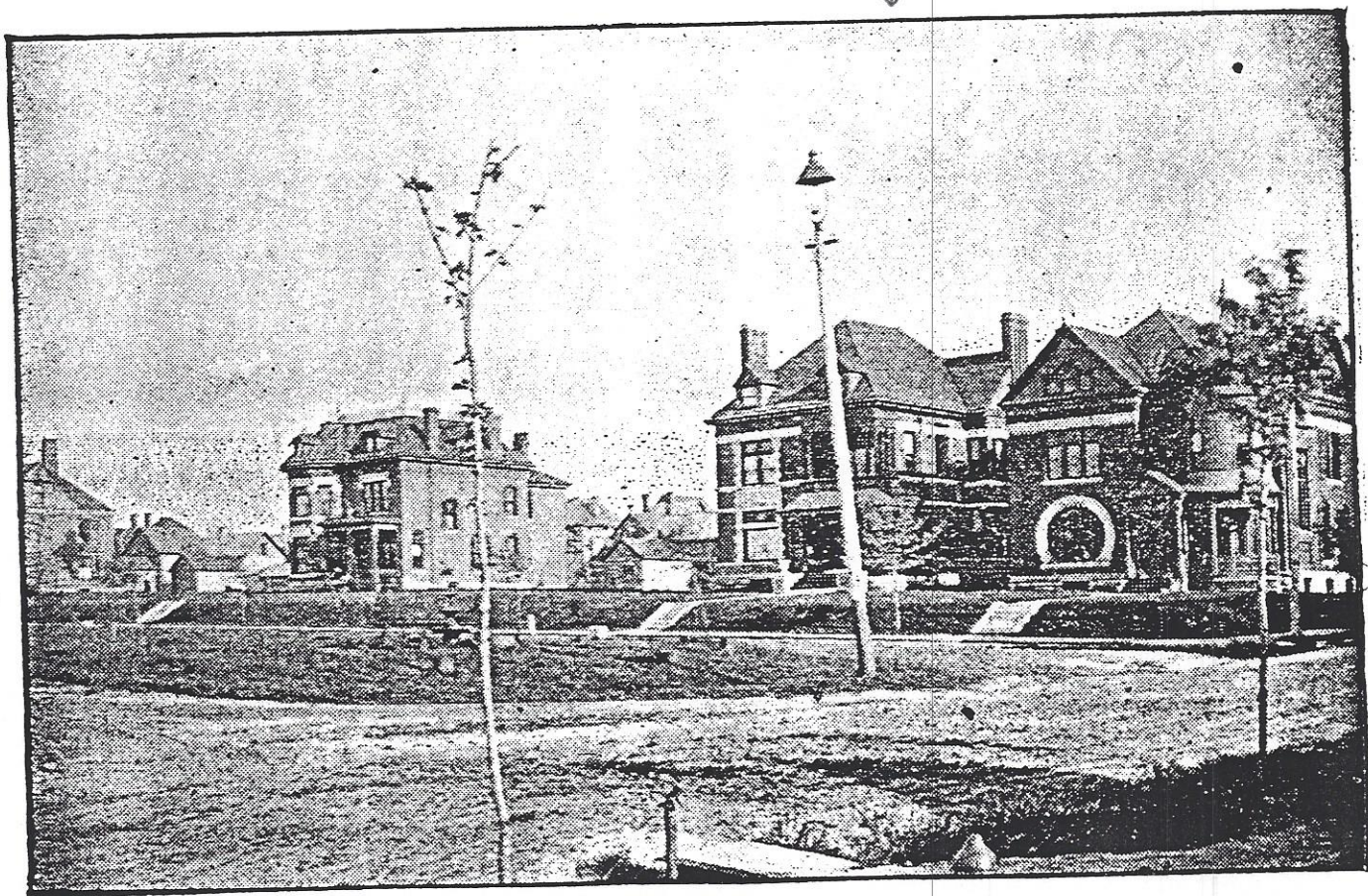


1206 Park Place





Park Place.
Part of North Side. 1206
↓



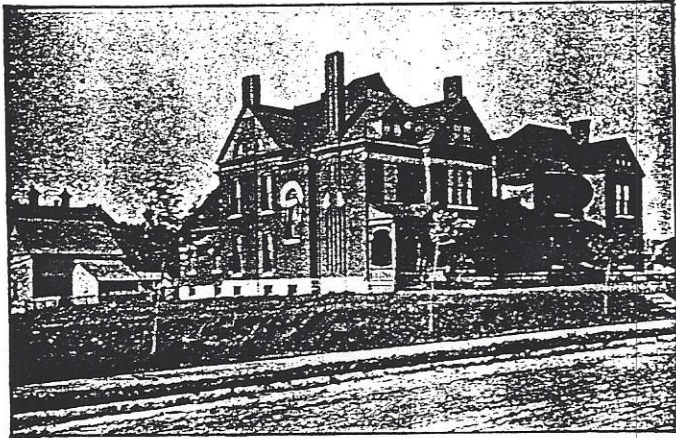
Part South Side.

Thad Ward's Souvenir
Views - 1892

SOUVENIR VIEWS OF QCY. K

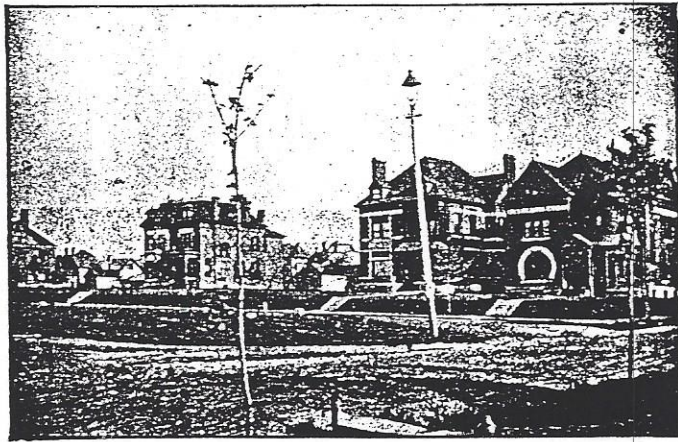
THAD. W. WARD, 18 92

-see Park Place



Park Place.
Part of North Side.

1217, 1219



Part South Side.

12th. Park Place

1200

1206

1200

John + Kimberly Rokusek (6-1-98)

1206 Park Place - Edward and Matilda Menke Residence

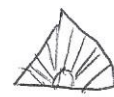


hip roof
stone foundation

This High Queen Anne (Victorian, Eclectic, Romanesque) house was designed by John Batschy in 1891. The two and half story brick house has a steep hip roof. The shingled gabled dormers have a sunburst/fan wood carving. The right side of the facade has a recessed double door entry and balcony. The porch has square columns. A brick indent paneled frieze wraps the house. The east side is marked by quoined windows with a beveled glass transom. The deeply cut stone lintel is in a stylized acanthus pattern. The second floor features double windows with double stained glass transoms and cut stone consoles. The lintel is made of a plain cut stone. On the west side, there is a three story bay with an attic gable dormer. The central chimney is also found here. The quarter round gallery windows are in the Venetian style. The house is currently listed as a contributing structure on the East End Historic District.

The east side is marked by quoined windows with a beveled glass transom. The second floor features double windows with double stained glass transoms and cut stone consoles. The lintel is made of a plain cut stone. On the west side, there is a three story bay with an attic gable dormer. The central chimney is also found here. The quarter round gallery windows are in the Venetian style. The house is currently listed as a contributing structure on the East End Historic District.

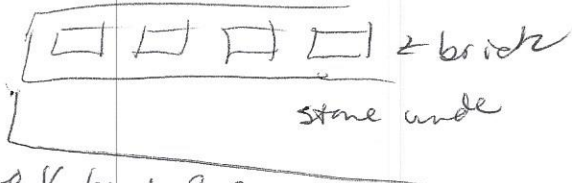
facade - dormer - shingled - sunburst
2nd window -> stained glass transom
double door + parlor -> stained glass transoms
left -> stone detail by + curved stone over
porch - original urns? -> carved stone base



east - chimney - rounded corners - stone carved detail ->
round turret -> window 5/1
west - projected gable -> central chimney
-> shingled
- 1 V band window at 1st/2nd
-> same detail



decorative brick band - along roof
stone band -> bottom 3rd, top 1st -> no V band, P.P.



Menke - foreman - Menke Stone + Lime Co